



47 Marsham Street, Westminster
London SW1P

GARTONJONES.COM

47 Marsham Street, Westminster
London, SW1P

GARTON JONES.COM

49 Marsham Street Lettings:
London +44 (0) 20 7340 0480
SW1P 3DP westminster@gartonjones.com
www.gartonjones.com

£785 Per Week

A well presented 2 bedroom apartment available to rent located in this popular development in the heart of Westminster. The internal living space comprises of an open plan reception room with views onto the pretty landscaped gardens, an integrated kitchen, 2 bedrooms both with fitted wardrobes and the master benefitting from an en-suite and further guest bathroom. As a resident of Romney House you will also have the use of a 24 hour concierge and a well-equipped gymnasium. The development is extremely convenient for access to many of the renowned local landmarks which include the Houses of Parliament, Westminster Abbey, Tate Britain Gallery and the River Thames. The local transport links of Victoria Station is nearby providing mainline UK services including the Gatwick Express as well as the underground services of Victoria, Pimlico, St James Park and Westminster. The area has an abundance of amenities and restaurants such as The Cinnamon Club, Osteria Dell'angolo and many more. Just a short walk away is the Chelsea College of Arts and St Johns Smith Square Concert Halls offering a variety of classical musical performances. Garton Jones are based on site and manage this apartment.

Deposit 5 Weeks
Minimum Term 12 Months
Council Tax Band F (London Borough of Westminster)
EPC Rating C (78)

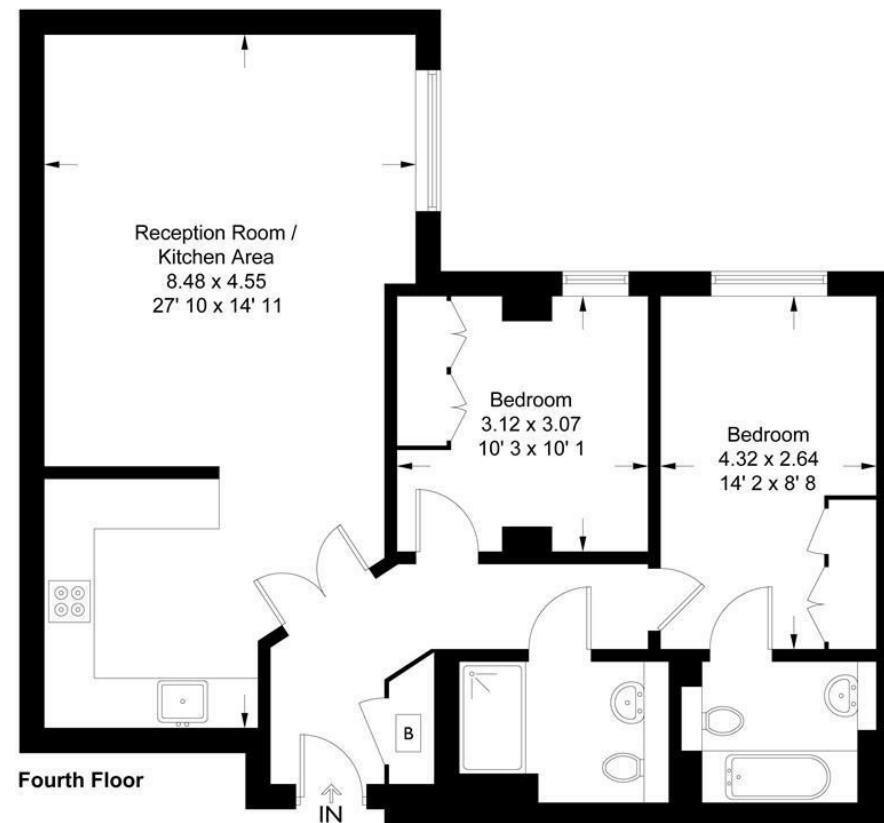
- 2 Bedroom Apartment
- 4th Floor (Lift)
- Open Plan Reception Room
- Smart Integrated Kitchen
- 2 Bathrooms (En-Suite)
- Garden Views
- Available: 9th September 2025
- 24 Hour Concierge and Resident Gymnasium (online booking is required)
- Close to Local Amenities
- Walking Distance to St James's Park, Westminster & Victoria Rail/Tube Links



Romney House

Approximate Gross Internal Area = 822 sq ft / 76.4 sq m

GARTON JONES
LONDON



This plan is not to scale and must be used as layout guidance only. All measurements and areas are approximate and should not be relied upon to provide accurate information. This plan must not be relied upon when making property valuations, design considerations or any other such relevant decisions. We accept no responsibility or liability (whether in contract, tort or otherwise) in relation to any loss whatsoever arising from or in connection with any use of this plan or the adequacy, accuracy or completeness of it or any information within it.



